



nordlux®

Outdoor novelties

2022/2023



Outdoor novelties

This year Nordlux presents the highest number of novelties ever in the outdoor category. We introduce almost 100 new products – all thought out, designed and developed by our own design and development team.

Outdoor lighting is becoming an even more integral part of exterior design. Light is incorporated as an important part of making outdoor areas an extension of our living spaces. The line between indoor and outdoor is gradually blurred and the outdoors becomes an additional room in our homes – whether it is a garden, a balcony, a terrace or a greenhouse.

The 2022/2023 outdoor range is a little bit different than previous years. Three different trends characterize the entire collection - the **Minimalistic** trend, the **New Nordic** trend and last but not least, the **Authentic** trend. These trends all have different materials, design expressions and usage situations. Trends that cover a large span of different wishes and needs.

We proudly present our 2022/2023 outdoor collection



A strong product collection has a clear direction and theme carried out in both products, storytelling and marketing materials. Explore the characteristics for the New Nordic trend theme, the most significant products and why the theme is relevant in today's world. Enjoy the deep dive brought to you by responsible Chief Product Officer Kasper Granat via video.

New Nordic trend

With the New Nordic trend, we move the boundaries and push the norms of what outdoor lighting should look like and how it should be used. We set them free from fixed installations and make them mobile.

We play with new, exciting shapes and also some bold, bright and trendy colours that are not usually seen in outdoor lighting. All for all designs, we make sure to bring the world-famous Danish "hygge".

Bring



Bring 12, White 2213371001

Bring is a stylish and portable outdoor light by designers Timothy Jacob Jensen and Alasdair McPhail. Bring has a round, illuminated surface elegantly embraced by a black rubber band that also serves as a practical handle or suspension. A gentle tap enables the Moodmaker™ functionality and dims the light in two steps. An additional tap turns the light off. Long battery life and a water-resistant surface made from recycled materials makes it ideal to bring anywhere - to the beach, the park or the terrace to light up those warm summer nights with a pleasant and cosy ambience.

Learn more about Bring in the toolbox section at page 13



Watch the full ambience video and explore the functionalities of Bring





Bring 12, White 2218013001
Bring 16, White 2218023001



Coupar

The Coupar series by Danish design duo Says Who exhibits a modern take on the traditional lantern.

With clean lines and yet a soft, rounded design expression, the series effortlessly combines classic characteristics with a modern, contemporary look.

The ripped glass ensures a pleasant, diffused ambience while casting an interesting play of light.



Coupar Pendant, White 2218053001



Coupar Table, Black 2218075003

Coupar Garden, White 2218088001



*Learn more about Coupar in
the toolbox section at page 15*



Jim To-Go

Jim is designed by Danish design duo Says Who. The series has a rounded, airy silhouette and a practical handle that makes it easy to place wherever you need it.

The portable lamp is battery powered and has Moodmaker™ functionality that makes it possible to adjust the light in three different light settings - perfect to set the right ambience on the terrace, balcony or in the garden.

Learn more about Jim To-Go in the toolbox section at page 18



Watch the full ambience video and explore the functionalities of Jim To-Go



Jim To-Go, Red 2218105002
Jim To-Go, Black 2218105003
Jim To-Go, Blue 2218105006
Jim To-Go, Grey 2218105010
Jim To-Go, Olive 2218105023
Jim To-Go, Orange 2218105027



White 2218013001
Plastic/Plastic



White 2218023001
Plastic/Plastic

Bring To-Go Portable

Masterbox	Qty. 3
Size	H: 12 cm, Ø: 12 cm, Shade Ø: 12 cm,
IP Class	IP44, Class 3 (12V)
Cable	Black 70 cm,
Lightsource	LED Module70 Lumen, 2700K Kelvin, 25000 Hours, Has built-in dimmable light source with Moodmaker™ functionality

Features

Easy to bring everywhere (battery powered)
Made from recycled materials
Water resistant (IP65)
Just tap to turn on/off
USB cable for charging included
Long battery life



70lm



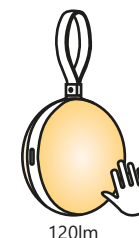
20lm

Bring To-Go Portable

Masterbox	Qty. 3
Size	H: 16 cm, Ø: 16 cm, Shade Ø: 16 cm,
IP Class	IP44, Class 3 (12V)
Cable	Black 70 cm,
Lightsource	LED Module120 Lumen, 2700K Kelvin, 25000 Hours, Has built-in dimmable light source with Moodmaker™ functionality

Features

Easy to bring everywhere (battery powered)
Made from recycled materials
Water resistant (IP65)
Just tap to turn on/off
USB cable for charging included
Long battery life



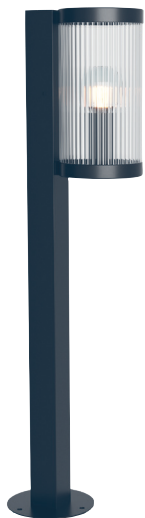
120lm



40lm



White 2218088001
Aluminium/Plastic



Black 2218088003
Aluminium/Plastic



Sanded 2218088008
Aluminium/Plastic

Coupar Garden

Masterbox	Qty. 3
Size	H: 80 cm, W: 14,5 cm, L: 14,5 cm, Shade Ø: 13 cm, Tube Ø: 5 cm, Base Ø: 14.5 cm,
IP Class	IP54, Class 1 (Earth contact)
Lightsources	E27 - bulb not included

Features

Durable, powder coated metal
Ripped diffuser creates a pleasant light
Parallel connection possible



White 2218061001
Plastic/Aluminium



Black 2218061003
Plastic/Aluminium



Sanded 2218061008
Plastic/Aluminium

Coupar Wall

Masterbox	Qty. 3
Size	H: 25 cm, W: 13 cm, L: 13 cm, Shade Ø: 13 cm, Base Ø: 25 cm x 4,5 cm x 3,2 cm cm,
IP Class	IP54, Class 1 (Earth contact)
Lightsources	E27 - bulb not included

Features

Durable, powder coated metal
Ripped diffuser creates a pleasant light
Parallel connection possible



White 2218075001
Plastic/Aluminium



Black 2218075003
Plastic/Aluminium



Sanded 2218075008
Plastic/Aluminium

Coupar Table

Masterbox	Qty. 3
Size	H: 25 cm, W: 13 cm, L: 13 cm, Shade Ø: 13 cm,
IP Class	IP54, Class 2 (Double isolated)
Cable	Black 150 cm, non replaceable Switch: On the base
Lightsource	E27 - bulb not included

Features

Durable, powder coated metal
Ripped diffuser creates a pleasant light



White 2218053001
Plastic/Aluminium



Black 2218053003
Plastic/Aluminium



Sanded 2218053008
Plastic/Aluminium

Coupar Pendant

Masterbox	Qty. 3
Size	H: 25 cm, W: 13 cm, L: 13 cm, Shade Ø: 13 cm,
IP Class	IP54, Class 2 (Double isolated)
Cable	Black 80 cm, non replaceable
Lightsource	E27 - bulb not included Can be dimmed by choosing a dimmable bulb

Features

Durable, powder coated metal
Ripped diffuser creates a pleasant light
Parallel connection possible



Red 2218105002
Metal/Plastic



Black 2218105003
Metal/Plastic



Blue 2218105006
Metal/Plastic



Grey 2218105010
Metal/Plastic



Green 2218105023
Metal/Plastic



Orange 2218105027
Metal/Plastic

Jim To-Go

- Masterbox** Qty. 4
- Size** H: 30,3 cm, Ø: 28 cm, Shade Ø: 16 cm,
- IP Class** IP54, Class 3 (12V)
- Cable** Black 100 cm,
Switch: On the base
- Lightsource** LED Module 300 Lumen, 2700 Kelvin, 30000 Hours,
Has built-in dimmable light source with
Moodmaker™ functionality



Features

- Easy to bring everywhere (battery powered)
- High lumen output (300 lumen)
- 3-step Moodmaker™



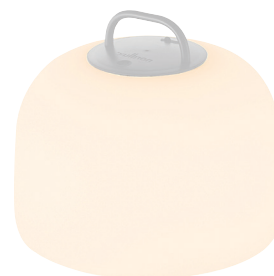
Green 2018013023
Plastic/Plastic



Blue 2018033006
Plastic/Plastic



Red 2018013002
Plastic/Plastic



Grey 2018033010
Plastic/Plastic



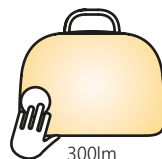
Orange 2018033027
Plastic/Plastic

Kettle To-Go 36

Masterbox	Qty. 3
Size	H: 30,8 cm, W: 36 cm, L: 36 cm, Ø: 36 cm,
IP Class	IP65, Class 3 (12V)
Cable	Black 150 cm, replaceable Switch: On the fixture
Lightsource	LED Module - 6,8W LED, 450 Lumen, 2700 Kelvin, 30000 Hours, RA 80, Beamangle 120°, Has built-in dimmable light source with Moodmaker™ functionality

Features

- Easy to bring everywhere (battery powered)
- Long battery life
- Durable materials
- High lumen output (300 lumen)
- 3-step Moodmaker™
- Water resistant (IP65)



Long life
battery incl.



USB
charge



Step dimming
on the product



**Watch the full ambience video and
explore the functionalities of Kettle To-Go**



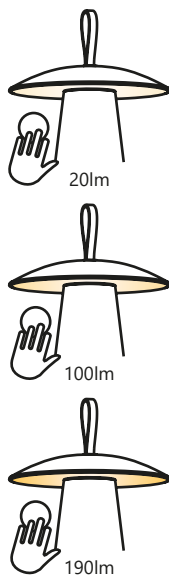
Sanded 2118245008
Aluminium/Plastic

Ara To-Go

Masterbox	Qty. 3
Size	H: 29,2 cm, Shade Ø: 19,7 cm,
IP Class	IP54, Class 3 (12V)
Cable	White 100 cm, non replaceable
Lightsource	LED Module - 2W LED, 105 Lumen, 3000 Kelvin, 30000 Hours, RA 80, Beamangle 125°,

Features

Battery powered
3-step Moodmaker™ function
Up to 80 hours of battery life



Sanded 2118211008
/Glass

Heka Wall

Masterbox	Qty. 3
Size	H: 21,6 cm, W: 10,6 cm, L: 10,6 cm, D: 13,8 cm, - Shade Ø: 10,6 cm,
IP Class	IP54, Class 1 (Earth contact)
Lightsource	E27 - bulb not included

Features

Compact and modern design
Parallel connection possible



A strong product collection has a clear direction and theme carried out in both products, storytelling and marketing materials. Explore the characteristics for the Minimalistic trend theme, the most significant products and why the theme is relevant in today's world. Enjoy the deep dive brought to you by responsible Chief Product Officer Kasper Granat via video.

Minimalistic trend

The Minimalistic trend is the classic Nordlux virtue of simple and clean Danish design products. The style is simple, elegant and streamlined in calm, classic colours.

The simplicity of the products makes them well-suited to compliment both modern and classic architecture.

Pontio Garden 15, White 2218208001
Pontio Wall 15, White 2218171001



Pontio Wall 27, Black 2218191003



Pontio

Pontio is a series of outdoor lights by Danish design duo Says Who in a streamlined, architectural design. The geometric shape adds a modern, yet timeless expression to your home - while the oblique shade provides a unique and interesting look from all angles. Matte, slightly textured surface in painted aluminium.

*Learn more about Pontio in
the Toolbox section at page 36*

Pontio Wall 27, Sand 2218191008





Oliver Ceiling Round, Black 2218261003

Oliver



Oliver Ceiling Round, Black 2218261003

Oliver Ceiling Square, Black 2218251003

The Oliver wall light emits a beautiful and diffused light that can be customised with the two included covers to create your own design expression.

Oliver is suitable for both wall and ceiling and has a beautiful backlight effect when turned on. Provides a practical light for your outdoor areas.

Learn more about Oliver in the Toolbox section at page 35





Nico

Nico Square has an elegant and modern design that casts the light both up and down, creating a beautiful light effect.

The oblique silhouette fits most exterior designs with a classic or contemporary architecture.

Learn more about Nico in the Toolbox section at page 34



Nico Square, Rust 2218231009

Aludra Wall, Black 2118011003

2022 WINNER
**EUROPEAN
PRODUCT
DESIGN
AWARD**

Aludra Ceiling, Black 2118006003
Aludra Garden 95, Black 2118038003

2022 WINNER
**EUROPEAN
PRODUCT
DESIGN
AWARD**

Aludra

Sculptural design and modern minimalism are the keywords for the Aludra series by renowned Jacob Jensen Design.

A compact and versatile wall light that creates a beautiful light and shadow effect and welcoming ambience in your outdoor spaces.



Watch the full ambience video and explore the functionalities of the Aludra series

2021 WINNER
EUROPEAN
PRODUCT
DESIGN
AWARD



Aludra Ceiling, Dark Brass 2118011061
Aludra Garden 45, Dark Brass 2118028061

2022 WINNER
EUROPEAN
PRODUCT
DESIGN
AWARD



Aludra Garden 95, Dark Brass 2118038061

Aludra Ceiling, Aluminum 2118006010
Aludra Wall, Aluminum 2118011010
Aludra Garden 45, Aluminum 2118028010
Aludra Garden 95, Aluminum 2118038010

Award winning Danish Design rewarded by EPDA (European Product Design Award).

Wall and garden 95 are "Top Winners" and ceiling and garden 45 are "Winners" in the category Illumination/Outdoor lighting.

Learn more about Aludra in the Toolbox section at page 31

2022 WINNER
EUROPEAN
PRODUCT
DESIGN
AWARD

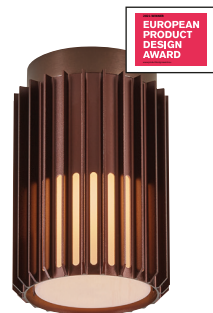




Aluminium 2118006010
Aluminium/Plastic



Dark brass 2118006061
Aluminium/Plastic



Black 2118006003
Aluminium/Plastic



Aluminium 2118011010
Aluminium/Plastic



Black 2118011003
Aluminium/Plastic



Dark brass 2118011061
Aluminium/Plastic

Aludra Ceiling

Masterbox	Qty. 3
Size	H: 18,8 cm, Shade Ø: 12,4 cm,
IP Class	IP54, Class 1 (Earth contact)
Lightsources	E27 - bulb not included Can be dimmed by choosing a dimmable bulb

Features

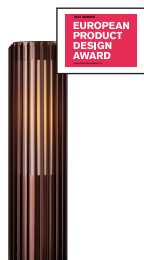
Beautiful light and shadow effect
Well suited for Nordlux Smart Bulb

Aludra Wall

Masterbox	Qty. 3
Size	H: 16,8 cm, D: 17,4 cm, Shade Ø: 12,4 cm,
IP Class	IP54, Class 1 (Earth contact)
Lightsources	E27 - bulb not included

Features

Beautiful light and shadow effect
Well suited for Nordlux Smart Bulb
Parallel connection possible



Dark brass 2118028061
Aluminium/Plastic



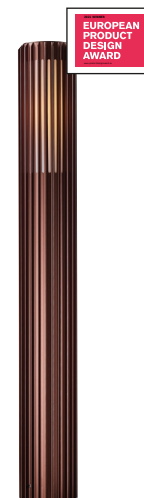
Black 2118028003
Aluminium/Plastic



Aluminium 2118028010
Aluminium/Plastic



Aluminium 2118038010
Aluminium/Plastic



Dark brass 2118038061
Aluminium/Plastic



Black 2118038003
Aluminium/Plastic

Aludra 45 Garden

Masterbox	Qty. 3
Size	H: 45 cm, Shade Ø: 12,4 cm,
IP Class	IP54, Class 1 (Earth contact)
Lightsources	E27 - bulb not included

Features

Beautiful light and shadow effect
Well suited for Nordlux Smart Bulb
Parallel connection possible
Easy to install with the included base
Small, compact design

Aludra 95 Garden

Masterbox	Qty. 3
Size	H: 95 cm, Shade Ø: 12,4 cm,
IP Class	IP54, Class 1 (Earth contact)
Lightsources	E27 - bulb not included

Features

Beautiful light and shadow effect
Well suited for Nordlux Smart Bulb
Parallel connection possible
Easy to install with the included base
95 cm high



Stainless steel 2218400034
Aluminium/Stainless steel

Andor Round Ground Recessed

Masterbox	Qty. 3
Size	H: 14,8 cm, W: 11 cm, L: 11 cm,
IP Class	IP67, Class 1 (Earth contact)
Lightsource	GU10 - bulb not included

- Features**
- Ground recessed spotlight perfect for the driveway, walkway or garden
 - Suited for a GU10 bulb
 - Parallel connection possible



Stainless steel 2218410034
Aluminium/Stainless steel

Andor Square Ground Recessed

Masterbox	Qty. 3
Size	H: 14,8 cm, W: 11 cm, L: 11 cm,
IP Class	IP67, Class 1 (Earth contact)
Lightsource	GU10 - bulb not included

- Features**
- Ground recessed spotlight perfect for the driveway, walkway or garden
 - Suited for a GU10 bulb
 - Parallel connection possible



Black 2218221003
Aluminium/Glass



Rusty 2218221009
Aluminium/Glass



Anthracite 2218221050
Aluminium/Glass

Nico Square Wall

Masterbox	Qty. 3
Size	H: 23,5 cm, L: 8 cm,
IP Class	IP54, Class 1 (Earth contact)
Lightsource	GU10 - bulb not included

Features

Lights both up and down
Replaceable GU10 bulb
Easy installation
Parallel connection possible



Black 2218231003
Aluminium/Glass



Rusty 2218231009
Aluminium/Glass



Anthracite 2218231050
Aluminium/Glass

Nico Round Wall

Masterbox	Qty. 3
Size	H: 23,5 cm, W: 7,7 cm, L: 7,7 cm,
IP Class	IP54, Class 1 (Earth contact)
Lightsource	GU10 - bulb not included

Features

Lights both up and down
Replaceable GU10 bulb
Easy installation
Parallel connection possible



Black 2218251003
Plastic/Plastic

Replaceable covers change the look

Oliver Square Wall

Masterbox	Qty. 6
Size	H: 17,5 cm, W: 17,5 cm, L: 17,5 cm,
IP Class	IP54, Class 1 (Earth contact)
Lightsource	LED Module600 Lumen, 2700K Kelvin, 30000 Hours

Features

Versatile wall light
Replaceable covers change the look (two included)
Backlight effect
High lumen output
Entry for cables outside on wall



Black 2218261003
Plastic/Plastic

Replaceable covers change the look

Oliver Round Wall

Masterbox	Qty. 6
Size	H: 19,5 cm, W: 19,5 cm, L: 19,5 cm, Shade Ø: 19,5 cm,
IP Class	IP54, Class 1 (Earth contact)
Lightsource	LED Module600 Lumen, 2700K Kelvin, 30000 Hours

Features

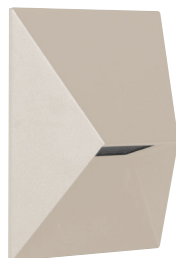
Versatile wall light
Replaceable covers change the look (two included)
Backlight effect
High lumen output
Entry for cables outside on wall



White 2218171001
Aluminium/Glass



Black 2218171003
Aluminium/Glass



Sanded 2218171008
Aluminium/Glass

Pontio 15 Wall

Masterbox	Qty. 3
Size	H: 19 cm, W: 15 cm, L: 15 cm,
IP Class	IP54, Class 1 (Earth contact)
Lightsource	GU10 - bulb not included

Features

Architectural design
Replaceable GU10 bulb
Parallel connection possible
Elegant compact size



White 2218191001
Aluminium/Glass



Black 2218191003
Aluminium/Glass



Sanded 2218191008
Aluminium/Glass

Pontio 27 Wall

Masterbox	Qty. 3
Size	H: 19 cm, W: 27 cm, L: 27 cm,
IP Class	IP54, Class 1 (Earth contact)
Lightsource	GU10 - bulb not included

Features

Architectural design
Replaceable GU10 bulb
Parallel connection possible
Double GU10 for extra light output
Space for house number or resident text



White 2218208001
Aluminium/Glass



Black 2218208003
Aluminium/Glass



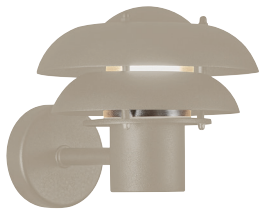
Sanded 2218208008
Aluminium/Glass

Pontio Garden

Masterbox	Qty. 3
Size	H: 85 cm, W: 15 cm, L: 15 cm, Tube Ø: 103 cm, Base Ø: 14,5 cm,
IP Class	IP54, Class 1 (Earth contact)
Lightsource	GU10 - bulb not included

Features

- Architectural design
- Replaceable GU10 bulb
- Parallel connection possible
- Fits our base unit for easy installation in ground

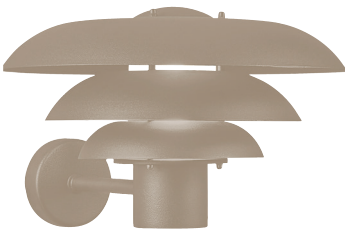


Sanded 2118061008
Metal/Plastic

Kurnos 20 Wall

Masterbox	Qty. 3
Size	H: 18,2 cm, L: 25,6 cm, D: 25,6 cm, Shade Ø: 20 cm,
IP Class	IP54, Class 1 (Earth contact)
Lightsource	E14 - bulb not included

- Features**
- Well suited for Nordlux Smart Bulb
 - Parallel connection possible
 - Only one visible screw



Sanded 2118071008
Metal/Plastic

Kurnos 35 Wall

Masterbox	Qty. 2
Size	H: 23,7 cm, L: 38,6 cm, D: 38,6 cm, Shade Ø: 35 cm,
IP Class	IP54, Class 1 (Earth contact)
Lightsource	E27 - bulb not included

- Features**
- Well suited for Nordlux Smart Bulb
 - Parallel connection possible
 - Only one visible screw



Sanded 84141008
Metal/Glass

Rold Round Wall

Masterbox	Qty. 3
Size	H: 16 cm, W: 9 cm
IP Class	IP44, Class 1 (Earth contact)
Lightsource	LED Module - 2X5W LED, 375 Lumen, 3000 Kelvin, 25000 Hours, RA 80, Beamangle 125°,

Features

5 year LED guarantee
Build-in parallel connection



Sanded 84151008
Metal/Glass

Rold Flat Wall

Masterbox	Qty. 3
Size	H: 16 cm, W: 9 cm
IP Class	IP44, Class 1 (Earth contact)
Lightsource	LED Module - 2X5W LED, 375 Lumen, 3000 Kelvin, 25000 Hours, RA 80, Beamangle 125°,

Features

5 year LED guarantee
Build-in parallel connection

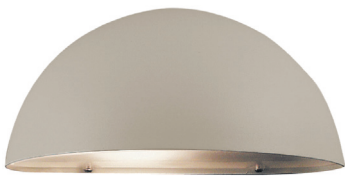


Sanded 21651008
Galvanized steel/Plastic

Scorpius Wall

Masterbox	Qty. 6
Size	H: 10 cm, W: 20 cm, D: 10 cm,
IP Class	IP23, Class 1 (Earth contact)
Lightsource	E14 - bulb not included

- Features**
- Timeless design
 - Build-in parallel connection



Sanded 21751008
Galvanized steel/Plastic

Scorpius Maxi Wall

Masterbox	Qty. 3
Size	H: 14 cm, W: 27 cm, D: 14,5 cm,
IP Class	IP23, Class 1 (Earth contact)
Lightsource	E27 - bulb not included

- Features**
- Timeless design
 - Build-in parallel connection



Authentic trend

The Authentic trend embraces both detailed, rustic designs and our most durable materials. It is almost the opposite of minimalism – it is detailed, honest design in quality materials such as brass and galvanized steel.

With this trend we are moving from the traditional suburbs into the countryside – bringing our Danish “hygge” with us.



A strong product collection has a clear direction and theme carried out in both products, storytelling and marketing materials. Explore the characteristics for the Authentic trend theme, the most significant products and why the theme is relevant in today's world. Enjoy the deep dive brought to you by responsible Chief Product Officer Kasper Granat via video.

Temple



Temple 30 To-Go, Galvanized 2218325031
Temple 35 To-Go, Galvanized 2218335031

Temple is a portable, solar powered lamp by Danish design duo Says Who that balances elements from the classic lantern with a modern, streamlined design. Temple is the perfect light for your garden, terrace or balcony as it turns on automatically when darkness falls and provides a cosy, yet practical light. Made from durable galvanized steel and brass that is well suited for harsh weather.

*Learn more about Temple in
the Toolbox section at page 49*



Temple 30 To-Go, Brass 2218325035
Temple 35 To-Go, Brass 2218335035



Temple 30 To-Go, Galvanized 2218325031
Temple 35 To-Go, Galvanized 2218335031
Temple 30 To-Go, Brass 2218325035
Temple 35 To-Go, Brass 2218335035



Watch the full ambience video and
explore the functionalities of Temple To-Go

Linton



Linton Pendant, Galvanized 2213371001

The Linton series by Danish design duo Says Who is carried out in a round and elegant design with clear references to the classic lantern. It has a ripped diffuser that ensures a pleasant, diffused light and a base made from galvanized steel that is well suited for harsh weather. The pendant is water resistant and creates the perfect ambience for your outdoor areas.



Linton Wall, Brass 2213371001

Linton Garden, Galvanized 2213371001



*Learn more about Linton in
the Toolbox section at page 50*



Watch the full ambience video and explore
the functionalities of the Linton series





Cross

The round, minimalist design expression of the Cross wall light by Danish designer Maria Berntsen will embellish any exterior design - almost like a piece of jewellery for your home.

Emits a warm, diffused light that creates an inviting atmosphere for your outdoor areas.

Learn more about Cross in the Toolbox section at page 48



Galvanized 2118121031
Galvanized/Plastic

Cross 20 Wall

Masterbox Qty. 3
Size H: 20,5 cm, W: 10,4 cm, L: 20,5 cm, D: 10,4 cm,
IP Class IP54, Class 1 (Earth contact)
Lightsource E14 - bulb not included

Features

Classic and modern design
Like a piece of jewellery for your house
Well suited for Nordlux Smart Bulb
Parallel connection possible



Galvanized 2118131031
Galvanized/Plastic

Cross 25 Wall

Masterbox Qty. 3
Size D: 13 cm, Ø: 26 cm,
IP Class IP54, Class 1 (Earth contact)
Lightsource E27 - bulb not included

Features

Classic and modern design
Like a piece of jewellery for your house
Well suited for Nordlux Smart Bulb
Parallel connection possible



Galvanized 2218325031
Metal/Plastic



Brass 2218325035
Brass/Plastic

Temple To-Go

Masterbox	Qty. 3
Size	H: 22,2 cm, W: 22,6 cm, L: 22,6 cm, Shade Ø: 22,6 cm, Base Ø: 13,8 cm,
IP Class	IP54, Class 3 (12V)
Lightsources	3000K Kelvin,

Features

Durable materials well-suited for harsh weather
Solar charged
High light output (300 lumen)
Turns on automatically when darkness falls



Galvanized 2218335031
Metal/Plastic



Brass 2218335035
Brass/Plastic

Temple To-Go

Masterbox	Qty. 3
Size	H: 30,4 cm, W: 31,3 cm, L: 31,3 cm, Shade Ø: 31,3 cm, Base Ø: 19 cm,
IP Class	IP54, Class 3 (12V)
Lightsources	3000K Kelvin,

Features

Durable materials well-suited for harsh weather
Solar charged
High light output (300 lumen)
Turns on automatically when darkness falls



Galvanized 2218308031
Metal/Plastic



Brass 2218308035
Brass/Plastic

Linton Garden

Masterbox	Qty. 3
Size	H: 79,9 cm, W: 14,5 cm, L: 14,5 cm, Shade Ø: 9,9 cm, Tube Ø: 8,9 cm, Base Ø: 14,5 cm,
IP Class	IP54, Class 1 (Earth contact)
Lightsource	E27- bulb not included

Features

Durable materials well-suited for harsh weather
Ripped diffuser creates a pleasant light
Water resistant (IP65)



Galvanized 2218281031
Metal/Plastic



Brass 2218281035
Brass/Plastic

Linton Wall

Masterbox	Qty. 3
Size	H: 29,8 cm, W: 13 cm, L: 13 cm, Shade Ø: 9,9 cm, Tube Ø: 6 cm, Base Ø: 9,8 cm,
IP Class	IP54, Class 1 (Earth contact)
Lightsource	E27 - bulb not included

Features

Durable materials well-suited for harsh weather
Ripped diffuser creates a pleasant light
Water resistant (IP65)



Galvanized 2218295031
Metal/Plastic



Brass 2218295035
Brass/Plastic

Linton Table

Masterbox	Qty. 3
Size	H: 32,5 cm, W: 13 cm, L: 13 cm, Shade Ø: 9,9 cm, Tube Ø: 6 cm, Base Ø: 9,9 cm,
IP Class	IP54
Lightsource	E27- bulb not included

Features

Durable materials well-suited for harsh weather
Ripped diffuser creates a pleasant light
Water resistant (IP65)



Galvanized 2218273031
Metal/Plastic



Brass 2218273035
Brass/

Linton Pendant

Masterbox	Qty. 3
Size	H: 278 cm, W: 13 cm, L: 13 cm, Shade Ø: 9,9 cm,
IP Class	IP54
Lightsource	E27- bulb not included, Can be dimmed by choosing a dimmable bulb

Features

Durable materials well-suited for harsh weather
Ripped diffuser creates a pleasant light
Water resistant (IP65)



What is FSC®?

We focus on protecting our resources and the environment. This is one of the reasons why we have been FSC certified since 2016. FSC certification is about using trade forest products such as wood and paper from responsible sources, and ensuring clear traceability for the wood – all the way from forest to the finished product in the shop.

Responsible sources refers to local populations, animals and plant life being taken into consideration, that logging is done in an environmentally appropriate way and that the deforested areas are replanted.

The desire and motivation for FSC certification of the products which include wood is a natural continuation and development of our approach to environment and sustainability – and we will continue to demand FSC certified wood for those of our design products that include wood.

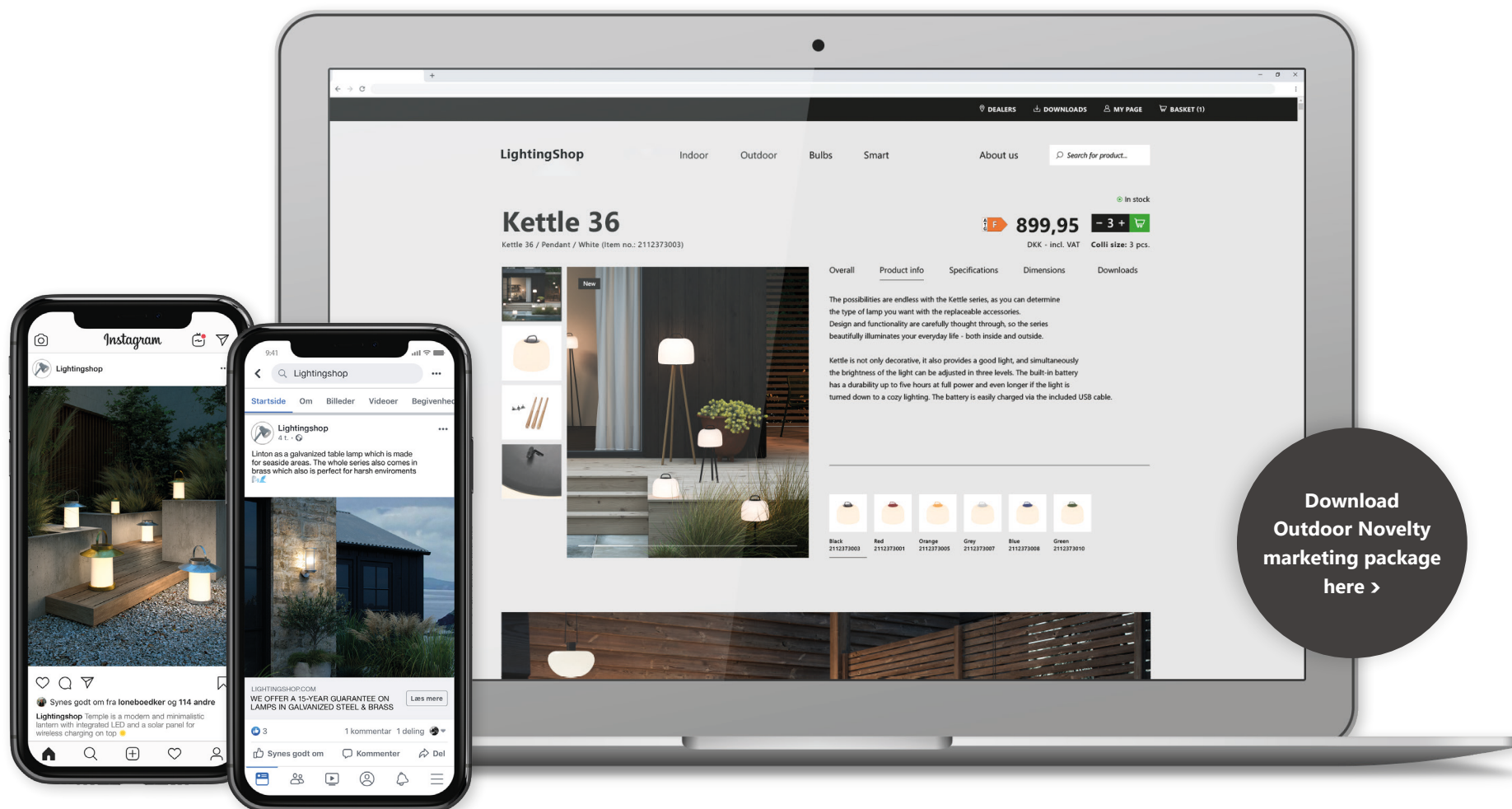
We see sustainability as a task involving everyone associated with Nordlux – from the owners, board and management to employees and suppliers.

*FSC® stands for Forest Stewardship Council® and is a recognised international non-profit labelling scheme for wood and paper.

FSC certification ensures responsible forest management and improved living conditions for the local population in forests worldwide.

Marketing Support

This year, we have made it easy for you to retrieve all the marketing material you need for our decorative novelties. You will find ready-to-use ambience photos and pack shots **right here**.



Showroom & Headquarters

Østre Havnegade 34
DK 9000 Aalborg
T + 45 98 18 16 11
nordlux@nordlux.com
nordlux.com

Benelux & Portugal

T +32 (0)15 25 76 40
info@nordlux.com

France

T +33 320 479 346
france@nordlux.com

Germany

T +49 (0) 21 52 89 87 37
F +49 (0) 21 52 14 85 54
germany@nordlux.com

Norway

T +47 51 88 63 18
norway@nordlux.com

Sweden

T +46 (0) 20 14 00 054
sweden@nordlux.com

UK & Eire

T +44 (0) 12 00 42 27 77
salesuk@nordlux.com

Der tages forbehold for ændringer m.h.t. tekniske specifikationer, design og collistørrelser.

Vi förbehåller oss för ändring med hänsyn till tekniske specifikationer, design och collistorlek.

We reserve the right to changes as to technical specifications, design and number of packages.

Wir nehmen Vorbehalt für Änderungen bezgl. technischer Spezifikationen, Design und Verpackungseinheiten.

Nous nous réservons le droit de modifier toute documentation technique, design et colisage.

We behouden ons het recht om technische specificaties, ontwerp en verpakingsaantal te wijzigen zonder voorafgaande kennisgeving.

nordlux®

nordlux.com

instagram **@nordlux**

pinterest **@nordlux**