



*Novelties 2022*





## *Design For The People 2022*

The 2022 collection from Design For The People marks the start of something new. We are very proud to present four new design collaborations with Danish designers that all contribute with new, creative designs in high-quality materials. Our proud, lasting collaboration with many of our familiar designers continues to evolve into great designs.

We interpretate inspiration from vintage Italian designs with distinctive and iconic silhouettes into new lighting designs. We explore elements from the contemporary Japandi-style where the balanced Japanese aesthetic meets the sleek, modern lines of the Scandinavian design tradition.

However, the collection is still anchored in the Scandinavian minimalistic style with classic designs, mixed materials, and matt silky surfaces. We have been focusing on recognizable and organic shapes, geometric structures that our designers have combined in new, exciting ways.

We strive to make timeless pieces you will value for years to come. Items that are made to last and will become classics that can stand the test of time. The use of quality materials such as marble, opal glass and brass, natural colours and a thought-out design are the fruits of innovative thinking that enhances our lives and the spaces surrounding us.

Please, let us present our beautiful new collection and provide you with all the inspiration you need.

**We proudly present the  
Design For The People 2022 Novelties**



## *Sofie Lefèvre*



The road to becoming a designer has not been straight ahead for Sofie Lefèvre. She started studying medicine, but after a year changed her course and continued her education within the design field. Several years in London and a degree in Innovation Design from Royal College of Art gave her hands-on experience and the drive to pursue a career within design.

Sofie Lefèvre



*Learn more about the  
designer Sofie Lefèvre*





*“Navone holds a special place in my heart. It is inspired by the fascinating glass art from the Murano Island in Italy.*

*The design of Navone is quite timeless, and I love how the suspension becomes an extension of the shape of the glass – two shapes in one harmonic interplay”*

Sofie Lefèvre

Learn more about Navone at page 46







*Watch the full ambience video  
to explore the Navone pendants*



Navone 30, Opal white 2220443001



## *Mademoiselles*

Mademoiselles by Danish design studio Mavro/Lefevre has a fun and light-hearted design expression where the round, oversized shade is balanced by the solid, marble base. Light is reflected upwards onto the bottom of the shade, creating a soft, indirect ambience.



Mademoiselles, White 2220405001

Learn more about Mademoiselles at page 45



*Watch the full ambience video  
to explore the Mademoiselles table lamp*



## *Beau*

Designed by Danish design studio Mavro/ Lefevre, the Beau pendant is based on the idea of extruding the silhouette of a lamp horizontally in space. Beau has a slim, minimalist design that looks beautiful above a dining table or in the kitchen. Comes with a replaceable bulb.

Learn more about Beau at page 39









*“I believe that instead of making trendy objects we should try to make objects that outlive trends”*

Asger Risborg Jakobsen

## *Asger Risborg Jakobsen*

With a background in both architecture and medicine, Danish designer Asger Risborg Jakobsen finds inspiration in the simultaneous complexity and simplicity of nature. He is driven by creating designs that outlive trends and that can endure everyday use over many years.



Asger Risborg Jakobsen





*“I wanted to create a lamp that combines the delicate qualities of rice paper lanterns with the durability to endure everyday use over many years.*

*I wanted to create a big lamp that could diffuse a lot light in a comfortable way, but without blocking the view”*

Asger Risborg Jakobsen



*Watch the full ambience video to explore the Hill pendant*

Learn more about Hill at page 43



## *Hill*

Hill is a large, geometric lampshade that fills the room without blocking the view. Created by Danish designer Asger Risborg, Hill is light as a cloud, but sharp as a rock. A lamp that is both complex and simple while creating a very soft light that spreads into the room in a calm, uniform way.







## *Charlotte Høncke*



Charlotte Høncke has always had a great passion for design and knew from a very early age that she wanted to pursue a carrier in design or architecture. In 2002 she graduated from Aarhus School of Architecture in Industrial Design, and a few years later she chose to become self-employed working with design full time.

*Charlotte Høncke*

Charlotte Høncke



*Learn more about the  
designer Charlotte Høncke*



## *Hello*

Hello by Danish designer Charlotte Hønlke has a playful and welcoming design language and a classic, organic silhouette. The large shade beautifully embraces the opal white glass dome and can even be turned all the way around for a playful mix between direct and indirect light.



Hello, Black 2220215003

Learn more about Hello at page 43



Hello, Grey 2220215010









*“I’m very proud of Maple.  
I really like the simple, organic  
shapes and the way the light  
unfolds and hits the shades.  
It almost resembles large flower  
petals that embrace the light in  
an effortless way”*

Charlotte Höncke

Learn more about Maple at page 45









*Watch the full ambience video  
to explore the Caché table lamp*



Caché, Black 2220275003

Caché, Grey 2220275010



## *Caché*

With Caché, Danish designer Charlotte Høncke has created a table lamp with an intriguing and eye-catching design. The lamp is made from two perfectly round shades, united elegantly by a solid marble base. Caché creates an interesting and playful ambience where the light is reflected back and forth between the two shades.

Learn more about Caché at page 42



## *Anker Studio*

Danish design duo Anker Studio consists of Jonas Poulsen and Christian Troels Hansen. For Anker Studio, good design is a design that people remember and fall in love with. Something that is part of a bigger story and that will be cherished for years. When working with lighting, Jonas and Christian find the balance between functionality and aesthetics fascinating.

*Jonas B. Poulsen & C.T.*

Jonas Birkebæk Poulsen & Christian Troels





## Versale

The Versale series by Anker Studio is the epitome of Scandinavian minimalism cut to the very core. A perfectly round shade with a uniform light surface only disturbed by the piercing frame. The table light can easily create the perfect ambience for your desk, sideboard or bedside table with a pleasant, glare-free light.



Versale, White 2220075001



Versale, Brown 2220053009



Watch the full ambience video  
to explore the Versale series



*“Some lamps are only functional,  
while some are more emotionally  
and aesthetically driven.”*

*The emotionally driven  
pieces become like an art object  
in the home. That’s what makes  
the work fun. There’s room  
for differences.”*

Anker Studio







*Watch the full ambience video  
to explore the Tullio pendant*

Tullio, White 2220033001



Tullio, Black 2220033003



## *Tullio*

The Tullio pendant by Danish designers Anker Studio has a soft and arched mode of expression - recognisable shapes put together in a new, interesting combination. The three round shades are elegantly placed together creating a grand and sculptural design. Diffusers ensure a uniform light surface and a glare-free light.

Learn more about Tullio at page 49



## *Maria Berntsen*



With her own design studio in Copenhagen, Maria Berntsen has since 1992 focused on architecture and design. Maria Berntsen is a well-established name in the design industry and has over the years collaborated with a wide range of Danish and international companies, where her extensive experience has resulted in many successful designs.

A stylized, handwritten signature of Maria Berntsen in black ink.

Maria Berntsen



*Learn more about the  
designer Maria Berntsen*



*“Glossy is my favourite lamp.  
I feel that it successfully  
balances form and a mix of  
materials. The entire construction  
and expression of the lamp is  
simple and timeless”*

Maria Berntsen





Angle, Black 2120601003



Angle, Grey 2220362010



## *Angle*

The Angle series by Danish designer Maria Berntsen has a modern and timeless design expression. The lamp is carried out in a playful and interactive design with a magnetically attached shade that can easily be adjusted to fit your needs. Turn, tilt or move the shade for a directional or indirect light. The lamp has a practical clamp that makes it possible to place the lamp on a shelf, a bookcase or anywhere you want to highlight selected details in your interior.

Learn more about Angle at page 38



## *Stay*

Stay is designed by Maria Berntsen and is a modern, yet timeless lighting design at the same time. The oblique cut of the shade creates an open and pointing shape that allows for lots of light to shine through. The Stay wall light emits a soft, comfortable light both upwards and downwards – creating the perfect light for your bedside or kitchen table.

Learn more about Stay at page 48







Learn more about the  
design duo Bjørn + Balle



## *Bjørn + Balle*



BJØRN + BALLE have both carried out a large number of design tasks for both national and international clients at many different areas, such as product design, furniture design, interior design, identity programs and exhibitions, and together they have great success with lighting design.

*Christian Bjørn & Rune Balle*

Christian Bjørn & Rune Balle



*“Quiet is better than loud.  
We like to create designs that  
are very simple. Designs that  
people feel safe about”*

Rune Balle









## *Arcello*

With Arcello Danish design duo Bjørn + Balle has created an elegant portable light with a pleasant, downward facing light. The design is simple, yet distinct with a beautiful, uniform anodized surface from top to bottom. The lamp is easily charged with the included USB cable.



Arcello, Anthracite 2220155050

Learn more about Arcello at page 38



Arcello, Brunished brass 2220155061



*“Great design is giving  
people what they want,  
and a little bit more”*

Henrik Bønnelycke

## *Bønnelycke MDD*

Bønnelycke MDD was established in 1988. Driven by a nosurpressable urge and desire to work constructively and innovatively, Bønnelycke MDD started his career with the design of lamps, furniture and interior decorating. Quickly, he became known as an unconventional architect with no whims and fancies. His ability to challenge and optimize the manufacturing process itself is to be found in Henrik's original professional background as a toolmaker.



Henrik Bønnelycke



*Learn more about the  
designer Henrik Bønnelycke*





## *Kaito Pro*

With Kaito Pro, Bønnelycke MDD has created a ceiling fixture that breaks with tradition. Here design and innovation merges into something greater. The shape stands out as sharp, modern and as a uniform, luminous surface. The functional kip joint in brass adds an elegant superiority to the design.



Kaito Pro 40, Black 2220526003

Learn more about Kaito Pro at page 44

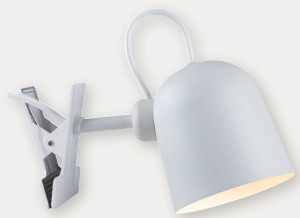


Kaito Pro 30, Black 2220516003



*Collection*  
*2022/2023*





White/Telegrey 2220362001  
Metal/Plastic



Grey 2220362010  
Metal/Plastic



Black 2220362003  
Metal/Plastic



Brunished brass 2220155061  
Metal/Plastic



Anthracite 2220155050  
Metal/Plastic

## Angle Clamp spots by Maria Berntsen

Masterbox	Qty. 3
Size	H: 12,4 cm, W: 10 cm, L: 10 cm, Shade Ø: 10 cm
IP Class	IP20, Class 2 (Double isolated)
Cable	Grey/White/Black 180 cm, non replaceable Switch: On the base
Lightsource	GU10 - bulb not included

### Features

Cool and playful design  
Satin soft, matte surface  
Magnet for easy adjustment of the shade  
Easy to place

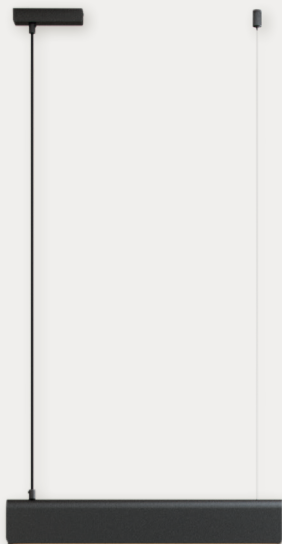
## Arcello Table by Bjørn + Balle

Masterbox	Qty. 3
Size	H: 25 cm, W: 14 cm, L: 14 cm, Shade Ø: 14 cm, Base Ø: 8 cm,
IP Class	IP54, Class 3 (12V)
Cable	Black 100 cm, replaceable Switch: On the base
Lightsource	LED Module, 2700K Kelvin, 15000 Hours,

### Features

Elegant design  
Portable and re-chargeable with included USB  
Pleasant, downward-facing light  
Beautiful anodized surface





Black 2220473003  
Metal/Metal

## Beau Pendant

Masterbox	Qty. 3
Size	H: 8,5 cm, W: 50 cm, L: 50 cm,
IP Class	IP20, Class 2 (Double isolated)
Cable	Black 300 cm, non replaceable
Lightsource	S14S included, 2700K Kelvin, 25000 Hours,

### Features

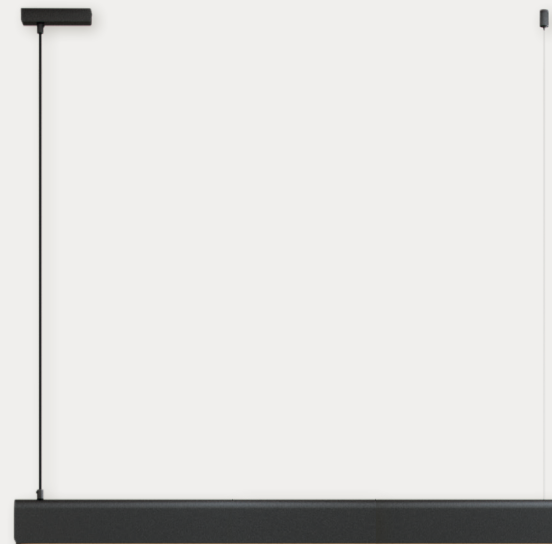
Scandinavian minimalism

Slim design

Beautiful above a dining table or in the kitchen

Replaceable bulb

Bulb included



Black 2220483003  
Metal/Metal

## Beau Pendant

Masterbox	Qty. 3
Size	H: 8,5 cm, W: 100 cm, L: 100 cm,
IP Class	IP20, Class 2 (Double isolated)
Cable	Black 300 cm, non replaceable
Lightsource	S14S - included, 2700K Kelvin, 25000 Hours,

### Features

Scandinavian minimalism

Slim design

Beautiful above a dining table or in the kitchen

Replaceable bulb

Bulb included





Matt black 2220275003  
Marble/Metal

Matt grey 2220275010  
Marble/Metal



Grey 2020505010  
Marble/Glass

## Caché Table by Charlotte Høncke

Masterbox	Qty. 2
Size	H: 49,2 cm, W: 30 cm, L: 30 cm, Shade Ø: 30 cm Base Ø: 9 cm
IP Class	IP20, Class 2 (Double isolated)
Cable	Black 250 cm, non replaceable Switch: On the cable
Lightsources	GU10 - bulb not included

### Features

Sculptural design  
Elegant material mix of metal and marble  
Soft, indirect light  
Movable shades

## Glossy Table by Maria Berntsen

Masterbox	Qty. 2
Size	H: 32 cm, Shade Ø: 32 cm, Base Ø: 12 cm,
IP Class	IP20, Class 2 (Double isolated)
Cable	White 2.5 cm, non replaceable Switch: On the cable
Lightsources	E27 - bulb not included

### Features

Sophisticated and elegant design  
Exclusive marble, glass and brushed steel  
Soft, diffused light through the opalized glass shade





**Black 2220215003**  
Metal/Glass



**Grey 2220215010**  
Metal/Glass



**Brown 2220215009**  
Metal/Glass



**White 2220103060**  
Tyvek/Metal

## Hello Table by Charlotte Høncke

<b>Masterbox</b>	Qty. 2
<b>Size</b>	H: 42,2 cm, W: 24,3 cm, L: 24,3 cm, Shade Ø: 30 cm, Base Ø: dia: 15.6*H15.5 cm,
<b>IP Class</b>	IP20, Class 2 (Double isolated)
<b>Cable</b>	Grey/Black/White 250 cm, non replaceable
<b>Lightsource</b>	E14 - bulb not included

### Features

Soft, organic shapes  
Playful and welcoming design language  
Movable shade for a direct or indirect light

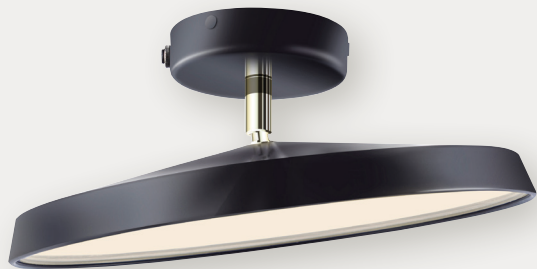
## Hill Pendant by Asger Risborg Jakobsen

<b>Masterbox</b>	Qty. 3
<b>Size</b>	H: 22 cm, W: 85 cm, L: 85 cm, Shade Ø: 85 cm,
<b>IP Class</b>	IP20, Class 2 (Double isolated)
<b>Cable</b>	White 300 cm, non replaceable
<b>Lightsource</b>	3xE27 - bulbs not included, Can be dimmed by choosing a dimmable bulb

### Features

Modern Japandi style  
Modern, yet timeless design  
Soft and diffused light  
Airy design language





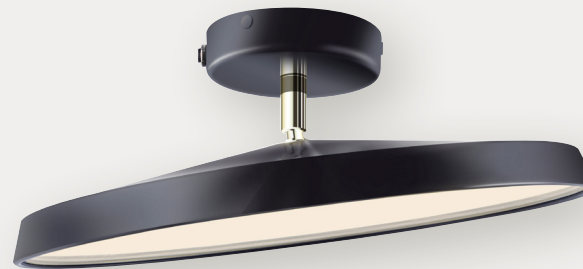
Black 2220516003  
Metal/Plastic

## Kaito Pro 30 Ceiling by Bønnelycke MDD

<b>Masterbox</b>	Qty 3
<b>Size</b>	D: 11,7 cm, Shade Ø: 30 cm, Base mount: Ø10,6 cm Tilt angle: 35°
<b>Material</b>	Aluminium/Acrylic
<b>IP Class</b>	IP20, Class 2
<b>Light source</b>	Fixed LED, Incl. 14W LED, Lumen 1.000, Kelvin 2700, Life hours 20.000, RA 80, Beam angle 120°, Dimmable

### Features

Tilt joint - possible to direct light  
Soft and diffused light  
BIM file available



Black 2220526003  
Metal/Plastic

## Kaito Pro 40 Ceiling by Bønnelycke MDD

<b>Masterbox</b>	Qty 3
<b>Size</b>	D: 11,7 cm, Shade Ø: 38,5 cm, Base mount: Ø10,6 cm Tilt angle: 35°
<b>Material</b>	Aluminium/Acrylic
<b>IP Class</b>	IP20, Class 2
<b>Light source</b>	Fixed LED, Incl. 24W LED, Lumen 1.600, Kelvin 2700, Life hours 20.000, RA 80, Beam angle 120°, Dimmable

### Features

Tilt joint - possible to direct light  
Soft and diffused light  
BIM file available





White 2220405001  
Marble/Metal



Black 2220405003  
Marble/Metal

## Mademoiselles Table by Sofie Lefèvre

Masterbox	Qty. 2
Size	H: 41,7 cm, W: 32 cm, L: 32 cm, Shade Ø: 32 cm, Tube Ø: 1,15 cm, Base Ø: 9 cm
IP Class	IP20,
Cable	Black/White 250 cm, non replaceable
Lightsource	GU10 - bulb not included

### Features

Modern Italian style  
Adjustable shade  
Soft, indirect light  
Elegant material mix of marble, brass and metal



Black 2220293003  
Metal/Plastic



Brown 2220293009  
Metal/Plastic

## Maple Pendant by Charlotte Høncke

Masterbox	Qty. 3
Size	H: 19 cm, W: 55 cm, L: 55 cm, Shade Ø: 55 cm,
IP Class	IP20, Class 2 (Double isolated)
Cable	Black/White 300 cm, non replaceable
Lightsource	E27 - bulb not included, Can be dimmed by choosing a dimmable bulb

### Features

Modern Italian style  
Organic shape



White 2220433001  
Glass/Metal

## Navone 20 Pendant by Sofie Lefèvre

Masterbox	Qty. 3
Size	H: 17 cm, W: 20 cm, L: 20 cm, Shade Ø: 20 cm,
IP Class	IP20, Class 2 (Double isolated)
Cable	White 300 cm, non replaceable
Lightsource	E27 - bulb not included, Can be dimmed by chosing a dimmable bulb

### Features

Timeless and classic design with modern details  
Organic shape  
Beautiful material mix of opal glass and brass



White 2220443001  
Glass/Metal

## Navone Pendant by Sofie Lefèvre

Masterbox	Qty. 2
Size	H: 25,5 cm, W: 30 cm, L: 30 cm, Shade Ø: 30 cm,
IP Class	IP20, Class 2 (Double isolated)
Cable	White 300 cm, non replaceable
Lightsource	E27 - bulb not included, Can be dimmed by chosing a dimmable bulb

### Features

Timeless and classic design with modern details  
Organic shape  
Beautiful material mix of opal glass and brass





Black 2220123003  
Metal

## Norbi 30 Pendant by Bjørn + Balle

Masterbox	Qty. 2
Size	H: 36,3 cm, W: 30 cm, L: 30 cm, Shade Ø: 30 cm,
IP Class	IP20, Class 2 (Double isolated)
Cable	Black 300 cm, non replaceable
Lightsource	E27 - bulb not included, Can be dimmed by chosing a dimmable bulb

### Features

Minimalistic and industrial design  
Adjustable lamp shade for a centered or diffused light  
Cool contrast between matte shade and shiny steel detail



Black 2220133003  
Metal

## Norbi 40 Pendant by Bjørn + Balle

Masterbox	Qty. 2
Size	H: 43,4 cm, W: 40 cm, L: 40 cm, Shade Ø: 40 cm,
IP Class	IP20, Class 2 (Double isolated)
Cable	Black 300 cm, non replaceable
Lightsource	E27 - bulb not included, Can be dimmed by chosing a dimmable bulb

### Features

Minimalistic and industrial design  
Adjustable lamp shade for a centered or diffused light  
Cool contrast between matte shade and shiny steel detail



Black 2220381003  
Metal



Grey 2220381010  
Metal

## Stay Short Wall by Maria Berntsen

Masterbox	Qty. 3
Size	H: 11,7 cm, W: 15 cm, L: 15 cm, Shade Ø: 16 cm
IP Class	IP20, Class 2 (Double isolated)
Cable	Grey/Black 180 cm, replaceable Switch: On the fixture
Lightsource	E27 - bulb not included

### Features

- Nordic and minimalistic design
- Adjustable lamp head
- Lights both up and down
- Perfect as a bedside light





White 2220033001  
Metal/Plastic

Black 2220033003  
Metal/Plastic

## Tullio Pendant by Anker Studio

Masterbox	Qty. 1
Size	H: 73 cm, W: 60 cm, L: 60 cm, Shade Ø: 25 cm, Tube Ø: 1,3 cm,
IP Class	IP20, Class 2 (Double isolated)
Cable	Black/White 300 cm, non replaceable
Lightsource	3xE14 - bulbs not included, Can be dimmed by choosing a dimmable bulb

### Features

Scandinavian minimalism  
Sculptural design  
Soft and diffused light



White 2220075001  
Metal/Plastic

Black 2220075003  
Metal/Plastic

## Versale Table by Anker Studio

Masterbox	Qty. 3
Size	H: 45 cm, W: 22 cm, L: 22 cm, Shade Ø: 22 cm, Tube Ø: 1,25 cm, Base Ø: 19 cm
IP Class	IP20, Class 2 (Double isolated)
Cable	Black/White 250 cm, non replaceable
Lightsource	3xG9 - bulbs not included

### Features

Scandinavian minimalism  
Soft shape with a contrast detail  
Soft and diffused light  
Shade can tilt up and down



White 2220053001  
Metal/Plastic



Black 2220053003  
Metal/Plastic



Brown 2220053009  
Metal/Plastic

## Versale Pendant by Anker Studio

Masterbox	Qty. 3
Size	H: 41 cm, W: 49,5 cm, L: 49,5 cm, Shade Ø: 49,5 cm,
IP Class	IP20, Class 2 (Double isolated)
Cable	White/Black/Brown 300 cm, non replaceable
Lightsource	2xE27 - bulbs not included, Can be dimmed by choosing a dimmable bulb

### Features

- Scandinavian minimalism
- Soft shape with a contrast detail
- Soft and diffused light



## Versale Floor

Masterbox	Qty. 2
Size	H: 140 cm, W: 28 cm, L: 28 cm, Shade Ø: 22 cm, Tube Ø: 1,45 cm, Base Ø: 28 cm,
IP Class	IP20, Class 2 (Double isolated)
Cable	Black/White 250 cm, non replaceable
Lightsource	3xG9 - bulbs not included

### Features

- Scandinavian minimalism
- Soft shape with a contrast detail
- Soft and diffused light
- Shade can tilt up and down

White 2220064001  
Metal/Plastic

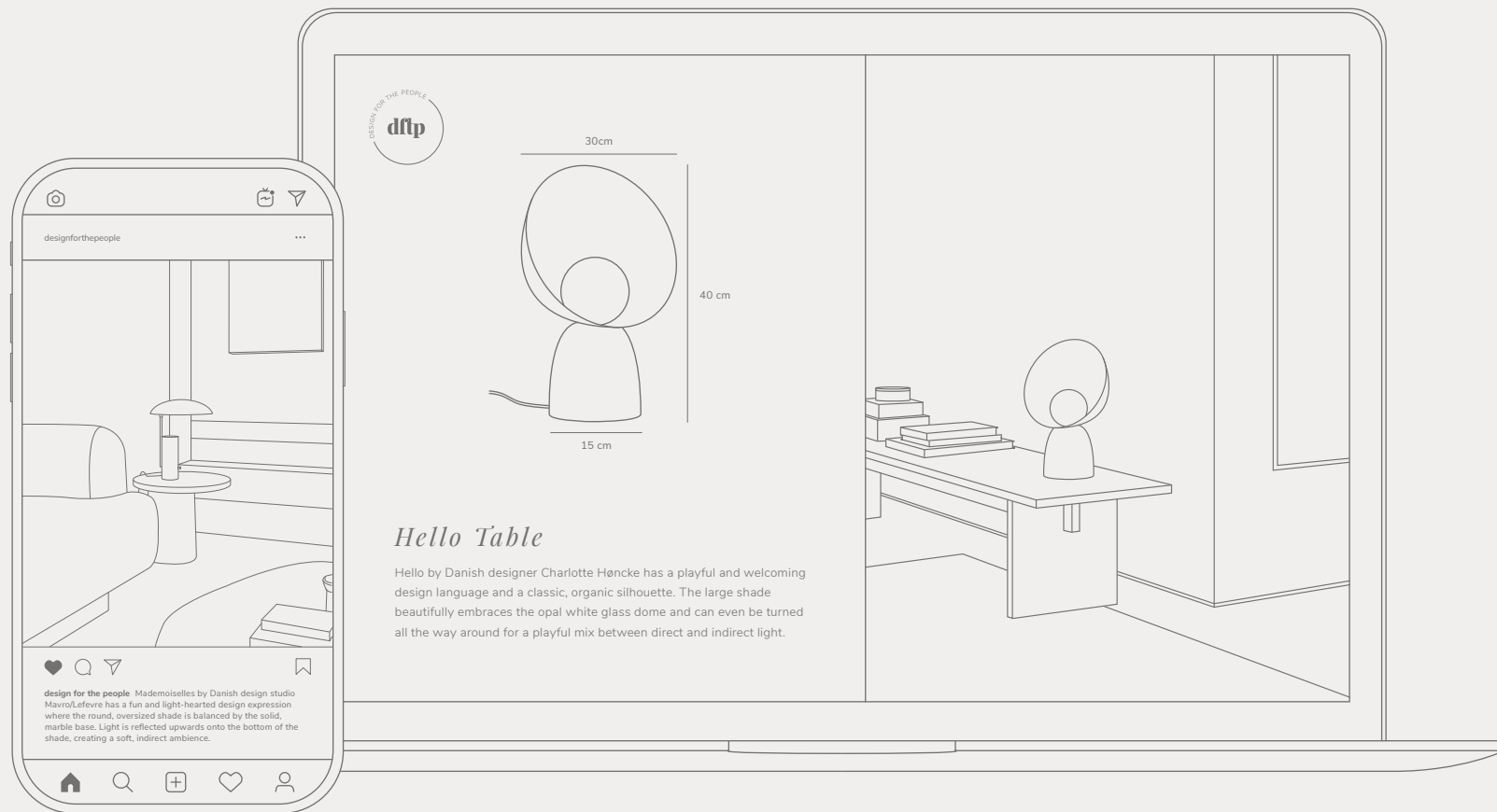


Black 2220064003  
Metal/Plastic



## Marketing support

We have made it easy for you to retrieve all the marketing material you need for dftp. You will find ready-to-use ambience photos, pack shots, videos and logos [right here](#).





### *Showroom & Headquarters*

Østre Havnegade 34  
DK 9000 Aalborg  
T + 45 98 18 16 11  
nordlux@nordlux.com  
nordlux.com

### *Benelux & Portugal*

T +32 (0)15 25 76 40  
info@nordlux.com

### *France*

T +33 320 479 346  
france@nordlux.com

### *Germany*

T +49 (0) 21 52 89 87 37  
F +49 (0) 21 52 14 85 54  
germany@nordlux.com

### *Norway*

T +47 51 88 63 18  
norway@nordlux.com

### *Sweden*

T +46 (0) 20 14 00 054  
sweden@nordlux.com

### *UK & Eire*

T +44 (0) 12 00 42 27 77  
salesuk@nordlux.com

Der tages forbehold for ændringer m.h.t. tekniske specifikationer, design og collistørrelser.

Vi förbehåller oss för ändring med hänsyn till tekniske specifikationer, design och collistorlek.

We reserve the right to changes as to technical specifications, design and number of packages.

Wir nehmen Vorbehalt für Änderungen bezgl. technischer Spezifikationen, Design und Verpackungseinheiten.

Nous nous réservons le droit de modifier toute documentation technique, design et colisage.

We behouden ons het recht om technische specificaties, ontwerp en verpakingsaantal te wijzigen zonder voorafgaande kennisgeving.



**nordlux.com**

instagram **@nordlux**

pinterest **@nordlux**